



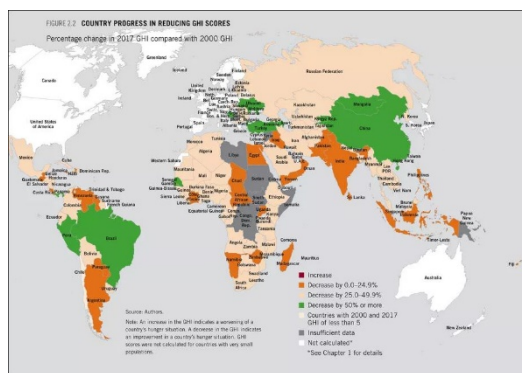
# COMMUNITY DEVELOPMENT *e · n e w s*

December 2018

## Reports & Resources

### 23 Charts and Maps That Show the World is Getting Much, Much Better Vox | [READ STORY](#)

For most Americans, these feel like bleak times. But it would be a mistake to view that as the sum total of the world in 2018. Under the radar, some aspects of life on Earth are getting dramatically better. Extreme poverty has fallen by half since 1990, and life expectancy is increasing in poor countries — and there are many more indices of improvement like that everywhere you turn.



### The \$80 Trillion World Economy in One Chart

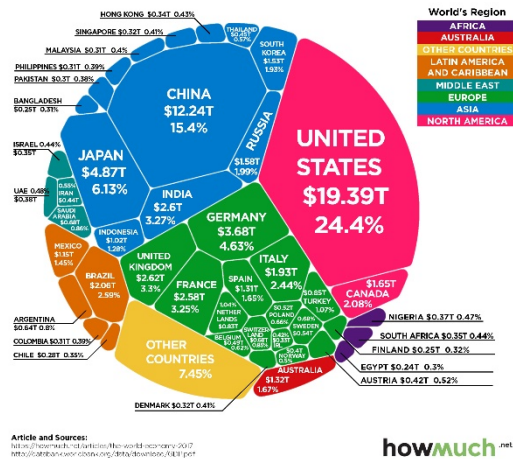
#### MT CD Update

The Proposal Deadline for the International Association for Community Development [2019 World Community Development Conference](#) has been extended to Dec. 10. The conference will take place June 23-26 at the University of Dundee, Scotland and has a great line-up of speakers and events including an optional post-conference Practice Exchange in rural Scotland. Montana State University Extension is offering scholarship funds to an MSU Extension faculty or staff member; [Email](#) for more info.

The proposal deadline for the 2019 NACDEP Conference (June 9 - 13,

## Visual Capitalist | [READ STORY](#)

The latest estimate from the World Bank puts global GDP at roughly \$80 trillion in nominal terms for 2017. In nominal terms, the U.S. still has the largest GDP at \$19.4 trillion, making up 24.4% of the world economy. While China's economy is far behind in nominal terms at \$12.2 trillion, you may recall that the Chinese economy has been the world's largest when adjusted for purchasing power parity (PPP) since 2016. The next two largest economies are Japan (\$4.9 trillion) and Germany (\$4.6 trillion) – and when added to the U.S. and China, the top four economies combined account for over 50% of the world economy.



## Where Americans Find Meaning in Life

### Pew Research Center | [READ STORY](#)

Economic, religious and political divides shape where Americans find meaning – but family, career and friendship emerge as common themes.

Asheville, NC) is Jan. 14; check the [NACDEP website](#) for more info.

Paul Lachapelle  
*MSU Community Development Specialist*

## Upcoming Events

### [NCD's Winter Legislative Meeting](#)

January 23-25, 2019  
Washington D.C.  
Sponsor: National Community Development Association

### [JCEP Extension Leadership Conference](#)

February 6-7, 2019  
San Antonio, Texas  
Sponsor: Joint Council of Extension Professionals

### [CDS 2019 Annual International Conference](#)

July 14-17, 2019  
Columbia, Missouri  
Sponsor: Community Development Society

## Grants, Awards & Jobs

### [Funding to Advance Justice and Opportunity for People in Need](#)

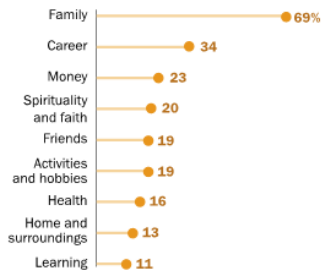
Deadline: Ongoing  
Funder: Public Welfare Foundation

### [Healthy Kids 2019](#)

Deadline: January 28, 2019  
Funder: Department of Health and Human Services

### Americans most likely to mention family when describing what provides them with a sense of meaning

In an open-ended question, % of Americans who mention \_\_\_ when describing what provides them with a sense of meaning

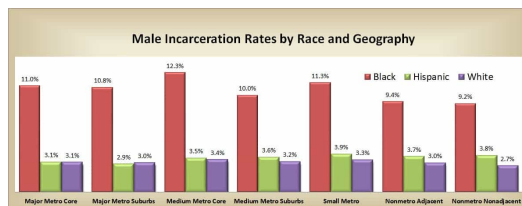


Source: Survey conducted Sept. 14-26, 2017, among U.S. adults. "Where Americans Find Meaning in Life"

PEW RESEARCH CENTER

### Growing Up in Rural Areas Appears to Decrease Incarceration Rate *Daily Yonder* | [READ STORY](#)

Children from poor families growing up in rural areas were less likely to be in prison by their late 20s and early 30s, according to a massive study conducted by economists at Harvard University.



### Climate Change Puts U.S. Economy and Lives at Risk, and Costs Are Rising, Federal Agencies Warns *Inside Climate News* | [READ STORY](#)

The U.S. government's climate scientists issued a blunt warning on Friday, writing that global warming is a growing threat to human life, property and ecosystems across the country, and that the economic damage—from worsening heat waves, extreme weather, sea level rise, droughts and wildfires—will spiral in the coming decades.

### Rural Residency Planning and Development Program

Deadline: March 4, 2019  
Funder: Department of Health and Human Services

### Regional Research Conferences in the Mathematical Sciences

Deadline: April 26, 2019  
Funder: National Science Foundation

### Community Development Block Grant Program

Deadline: Ongoing  
Funder: Department of Housing and Urban Development

### National/International News

#### [WHO Says Spread of Polio Remains International Health Emergency](#)

Reuters, November 30

#### [National Class Action Lawsuit Filed Over Marriott Data Breach](#)

Star Advertiser, December 1

#### [G20 Argentina: Saudi Prince's International Standing Revealed](#)

BBC, December 1

#### [National Weather Service Determines Strength of Central Illinois While Those Hit Start Rebuilding](#)

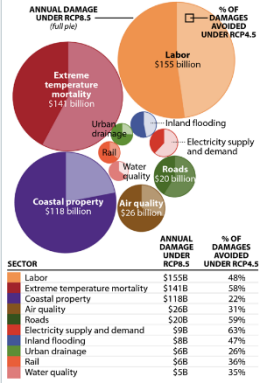
KMOV, December 2

### Montana News

FROM THE 2018 NATIONAL CLIMATE ASSESSMENT

**Climate Change's Economic Impact**

The National Climate Assessment warns that the costs of global warming are rising. If greenhouse gas emissions continue at a high rate (RCP 8.5), damage from climate change is expected to cost the U.S. economy hundreds of billions of dollars every year by 2090. If emissions peak before mid-century and start down (RCP 4.5), the U.S. economy will still suffer, but the cost will be less. The chart shows some of the top economic expenses.



SOURCE: Fourth National Climate Assessment | InsideClimate News

**Farm Bill Delays Create Uncertainty for Montana AG Community**

KBZK, November 29

**Montana Highway Patrol "Packs the Patrol Car" for Toys for Tots**

KULR, December 1

**EPA Delays Consent Decree for Butte, Anaconda Superfund Sites**

KXLFF, December 2

**Organizers call annual Roaddogs Toy Run a success, gathering over \$50K worth of gifts for kids**

Billings Gazette, December 2



MSU Extension Community Development | Wilson Hall 2-117 P.O. Box 172240 | Bozeman, MT 59717-2240

Tel: (406) 994-3620

Back issues of the Community Development E-news are available [here](#)

To subscribe to the Montana CD E-Newsletter, send a request to: [commdev@montana.edu](mailto:commdev@montana.edu)