

MACDEP NEWS

MONTANA ASSOCIATION OF COMMUNITY DEVELOPMENT EXTENSION PROFESSIONALS

March 2014

Reports & Resources

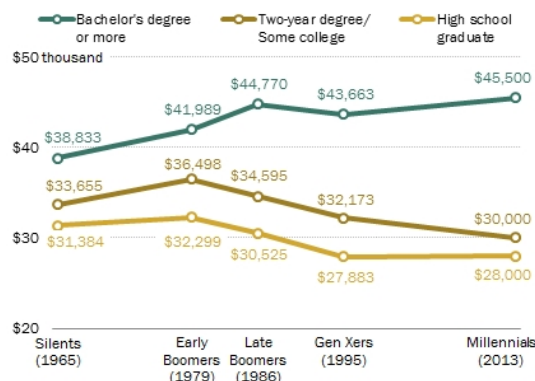
College and the American Economy

Pew Research | [READ STORY](#)

Having a college education is far more important for young adults entering the job market today than it was 50 years ago. In 1965, the median annual earnings of workers with at least a bachelor's degree was only about \$7500 higher than that of those with only a high school diploma (in 2012 dollars); now the median income for those with bachelor's degrees or more is roughly \$17,500 higher than that of those with only high school diplomas.

Rising Earnings Disparity Between Young Adults with And Without a College Degree

Median annual earnings among full-time workers ages 25 to 32, in 2012 dollars



President's Corner

A recent statement issued by the Joint Council of Extension Professionals (JCEP) at their Winter Meeting in Memphis, TN states "the JCEP Board decided to forego a fifth Galaxy Conference in 2018. The JCEP Board voted unanimously to create an exploratory committee to propose alternatives for a future Cooperative Extension System-wide conference."

[NACDEP](#) and [CDS](#) award applications are due March 15; please [contact me](#) with nomination suggestions.

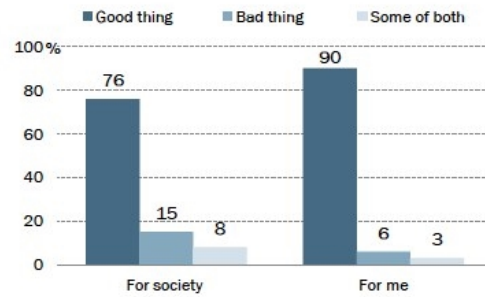
-Paul Lachapelle
MACDEP President

Upcoming Events

Community Development
Academy

Has the internet been a good thing or a bad thing?

% of internet users



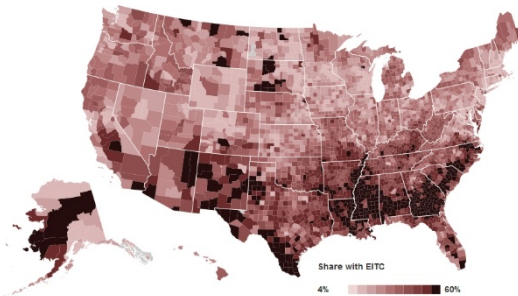
Source: Pew Research Center Internet Project Survey, January 9-12, 2014. N=857 internet users.

PEW RESEARCH CENTER

Distribution of Earned Income Tax Credit

[Brookings](#) | [READ STORY](#)

This interactive map tool, provided by Brookings.edu, displays county by county data on how many taxpayers have claimed the Earned Income Tax Credit. The map also allows the user to zoom in on particular areas to better distinguish counties, and provides data on the rankings--from the county with the highest average EITC amount claimed (or highest share of taxpayers claiming EITC) to the lowest.



Last Month was Globe's Fourth Warmest January Ever

[NOAA](#) | [READ STORY](#)

The National Oceanic and Atmospheric Administration is reporting last month was the fourth warmest January globally since record keeping began in 1880.

Training to Work 2-Adult Reentry

Deadline: April 18, 2014
Funder: US Department of Labor

YouthBuild Grants

Deadline: April 22, 2014
Funder: US Department of Labor

Recognizing Unique Opportunities to Improve Quality of Life for Military Families

Deadline: April 23, 2014
Funder: Newman's Own Awards

Proposals for Environmental, Education, Human Services Projects

Deadline: April 30, 2014
Funder: The Lawrence Foundation

Support for Social Justice Issues

Deadline: June 14, 2014
Funder: Public Welfare Foundation

National/International News

WY Has Worst CO2 Per Capita Record in Nation

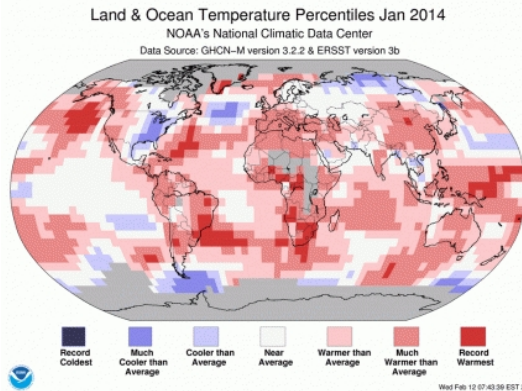
Star Tribune; February 28

13 Workers Exposed to Radiation at NM Waste Site

Idaho Statesman; February 27

Emergency Order Issued Regulating Oil Transport

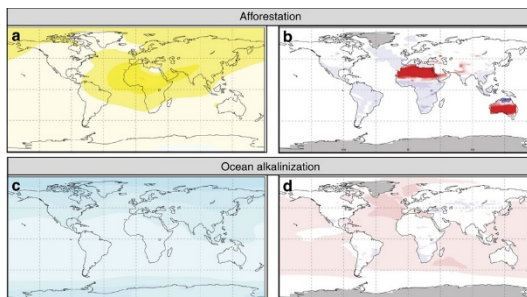
Temperature maps show much of the world -- except the eastern United States -- experienced warmer than average temperatures. The NOAA also reported 37 percent of the United States is now suffering from drought. Precipitation was below normal for more than 30 states last month.



New study reveals climate engineering could bring 'potentially severe side effects'

Nature Communications | [READ STORY](#)

Researchers from Germany's Helmholtz Centre for Ocean Research Kiel published findings in the journal Nature Communications, which echo other studies' warnings of geoengineering, that deliberate large-scale human manipulation of the climate as a way to mitigate soaring CO2 emissions is a technological path towards further climate chaos with potentially disastrous consequences.



Warming Is Happening, Action Imperative say Major Science

Flathead Beacon; February 25

Avalanche Deaths Increase with Severe Weather

Idaho Statesman; February 25

Obama Decision on Keystone XL Forthcoming

Helena IR; February 24

CO Program Teaches Tech Skills to Low-Income Youth

Denver Post; February 23

Montana News

MT Landowners Grill Energy Corp. of America

Billings Gazette; February 28

Yellowstone Grizzly Populations Stable

Great Falls Tribune; February 27

Sen. Tester Hosting Manufacturing Workshop

Helena IR; February 26

Fish Creek State Park Still Under Consideration

Missoulian; February 26

WY Coal Train Derails Near Terry, MT

Star Tribune; February 25

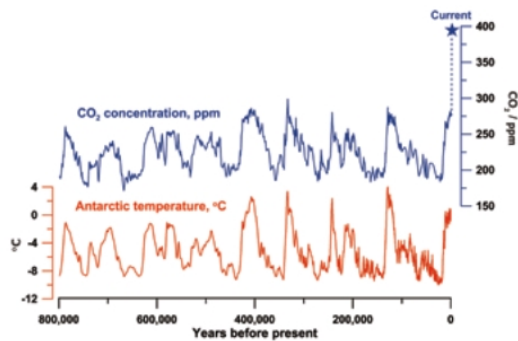
MT Bucket Biologists Under Fire

Helena IR; February 25

Academies

NAS | [READ STORY](#)

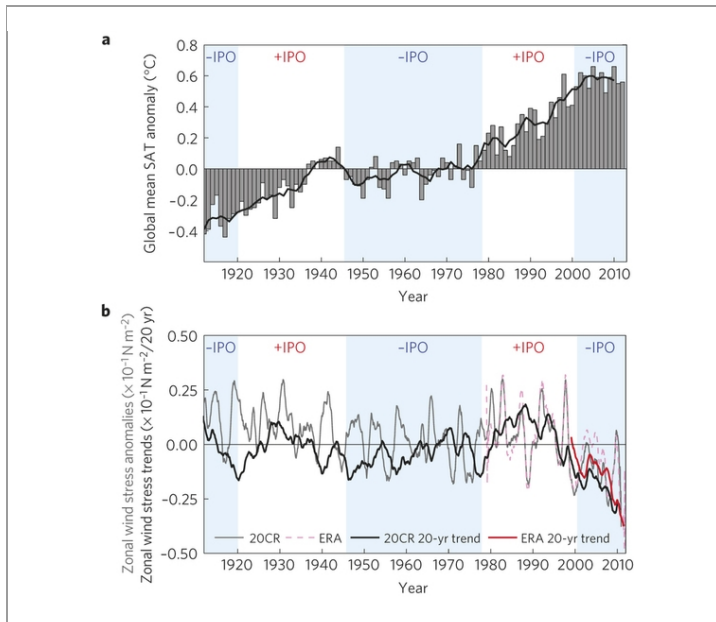
According to the U.S. National Academy of Sciences and the UK's Royal Society, in the jointly written guide on climate change and the state of climate science today, the world is undoubtedly warming and the global temperature could increase by 2.6-4.8C by the end of this century. As the leading scientists from the two countries emphasize, CO₂, the most prevalent greenhouse gas, has risen to levels unseen in the last 800,000 years, and measurements dating back to the mid-19th century show an obvious and steady warming trend. The guide also explains how this steady uptick in carbon, and the subsequent warming of the planet, are clearly the result of fossil fuel burning.



There Is No Warming "Pause," says Study: Planet, Oceans Are Warming

Nature Communications | [READ STORY](#)

Though surface temperature increases have slowed in recent years, global warming is accelerating rapidly as the oceans heat up. A new study, conducted by U.S. and Australian scientists and presented in the journal Nature Climate Change, shows that unusually powerful trade winds in the Pacific Ocean have contributed to pushing the warmer ocean waters to greater depths, creating an illusion of a warming plateau on the surface.



MSU Extension Community Development | Wilson Hall 2-117 P.O. Box 172240 | Bozeman, MT 59717-2240

Tel: (406) 994-3620

Back issues of the MACDEP E-news are available [here](#)

To subscribe to the Montana CD E-Newsletter, send a request to: commdev@montana.edu