

MACDEP^E NEWS

MONTANA ASSOCIATION OF COMMUNITY DEVELOPMENT EXTENSION PROFESSIONALS

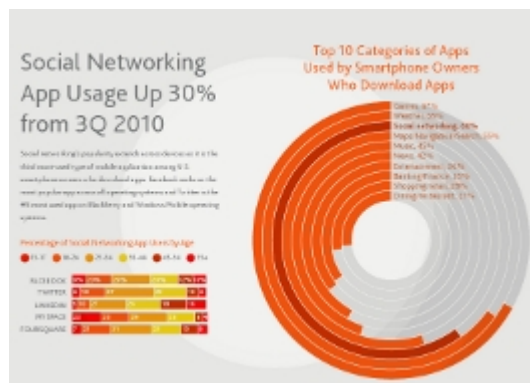
November 2011

Reports & Resources

Social Media Report Released

The Nielsen Company | [READ STORY](#)

A new report released by the Nielsen Company identifies social media trends.



Charities that Raise the Most

Philanthropy.com | [READ STORY](#)

The following map identifies by location the 400 charities in the US that raise the most money.

President's Corner

The Montana State University [Local Government Center](#) is announcing a new Webinar Series focusing on community resiliency and the built environment. Each bimonthly, one-hour interactive presentation will feature an author from the fall 2011 issue of the [Montana Policy Review](#). A complete list of topics and presenters as well as instructions on how to connect can be downloaded [here](#).

Our Annual MACDEP Business Meeting takes place Nov. 8 in Bozeman. Minutes will be posted on our MACDEP [website](#).

-Paul Lachapelle
MACDEP President

Upcoming Events

**Sustainable Communities
Online Courses**

Begins January 19, 2012



Sponsor: Regional Rural Development Centers

Basics of Board Service Seminar

November 3, Kalispell, MT
 Sponsor: Flathead Valley Community College

Prospera Annual Dinner and Business Excellence Awards

November 3, Bozeman, MT
 Sponsor: Prospera

Two-Day Grant Proposal Writing Seminar

January 5-6, Butte, MT
 Sponsor: Community Development Services

The Cost of Child Care

National Association of Child Care Resource and Referral Agencies | [READ STORY](#)

A new report details the costs of child care. The map below illustrates the 2010 costs for an infant in a center as a percent of two-parent median income.



Grants, Awards & Jobs

Beginning Farmer and Rancher Development Program

Deadline: November 22, 2011
 Funder: United States Department of Agriculture

America's Media Makers

Deadline: January 11, 2012
 Funder: National Endowment for the Humanities

Grants to Improve the Environment

Deadline: January 31, 2012
 Funder: Captain Planet Foundation

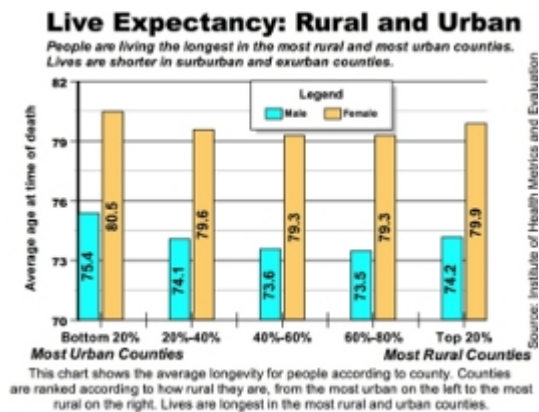
Specialty Crop Research Initiative

Deadline: January 31, 2012
 Funder: United States Department of Agriculture

Rural and Urban Life Expectancy

The Daily Yonder | [READ STORY](#)

The chart below compares the life expectancies of rural and urban residents.

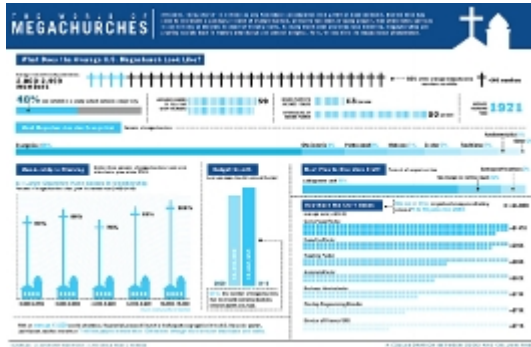


The Rise of Megachurches

Daily Good | [READ STORY](#)

National/International News

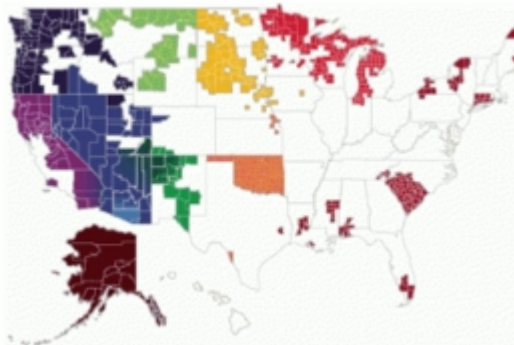
The infographic below illustrates the growth of megachurches, "large congregations that emphasize casual style over ritual and doctrine."



Indian Health Reform

[The Daily Yonder](#) | [READ STORY](#)

This article discusses the need to reform the Indian Health Service, an agency that oversees health care for the counties identified on the map below.



Education Jobs In Decline

[Center on Budget and Policy Priorities](#) | [READ STORY](#)

A Labor Department report finds that schools cut 24,000 jobs in the month of September, continuing a trend outlined in the figure below.

US and Canadian Dollar Reach Parity

Toronto Globe and Mail;
October 27

Government Identifies 'Solar Zones' in Western States

Salt Lake City Tribune;
October 27

China Enters Water Desalination Market

New York Times; October 25

US Solar Panel Manufacturers Accuse Chinese Manufacturers of Trade Violations

New York Times; October 19

USDA Releases Roundup Ready Assessment

Twin Falls Times-News;
October 19

Local Government Jobs Evaporate

CNN Money; October 7

Montana News

[Sustainable Development Community Folds](#)

Helena Independent Record;
October 28

[Bankruptcy Judge Approves Sale of Moonlight Basin to Lehman Brothers](#)

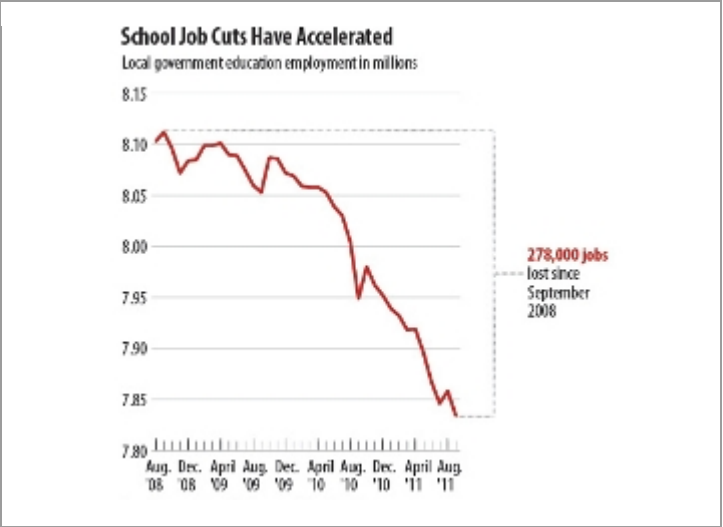
Bozeman Daily Chronicle;
October 27

[Montana Tribe Sees Energy Development as Pathway out of Poverty](#)

New York Times; October 25

[Montana Businesses Recognized](#)

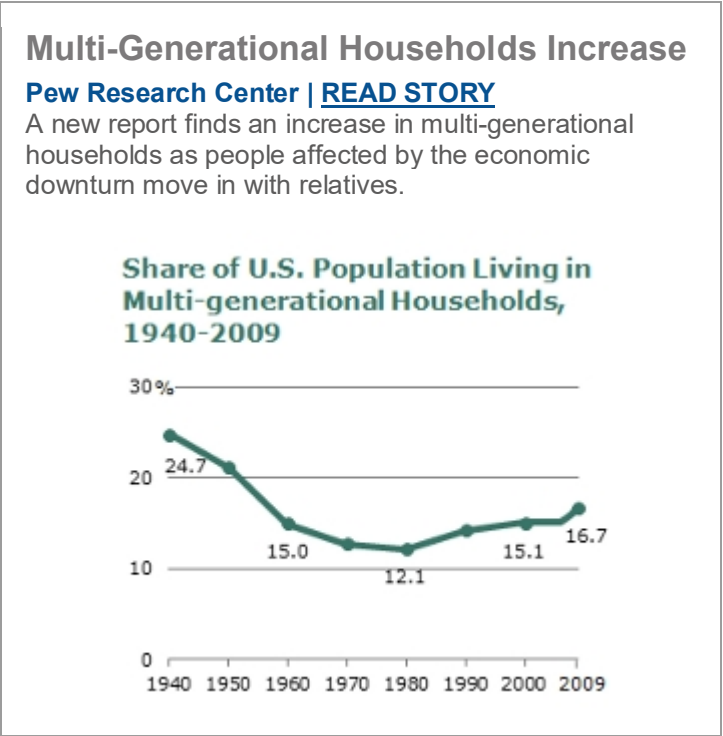
Flathead Beacon; October 25



[Crow Tribe Makes Compressed Earth Homes for Residents](#)
 Billings Gazette; October 25

[Oracle Buys Bozeman Company for \\$1.5B](#)
 Salt Lake City Tribune; October 24

[Museum Seeks to Encourage Interest in Science and Technology Among Youth](#)
 Missoulian; October 20



MSU Extension Community Development | Wilson Hall 2-117 P.O. Box 172240 | Bozeman, MT 59717-2240
 Tel: (406) 994-3620
 Back issues of the MACDEP E-news are available [here](#)
 To subscribe to the Montana CD E-Newsletter, send a request to: commdev@montana.edu

