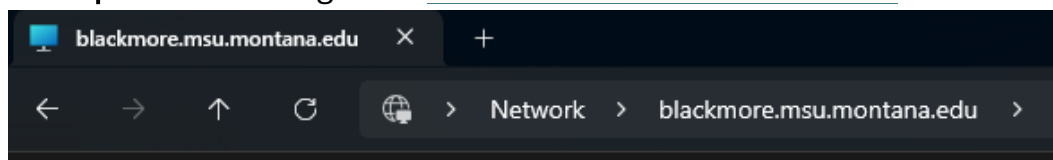


# Install ChemDraw on a Windows Computer

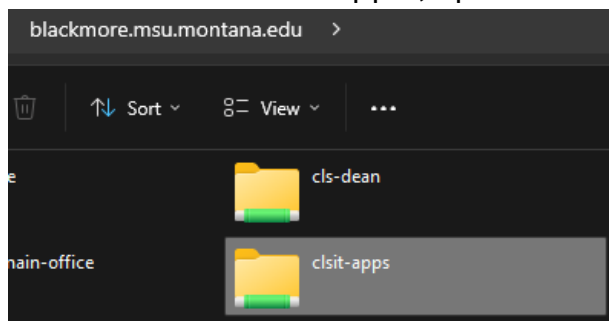
!!Make sure you are on campus, either wired network or on MSU Secure Wi-Fi!!

Please contact CLS IT at x5551 or [clsithelp@montana.edu](mailto:clsithelp@montana.edu) with any questions.

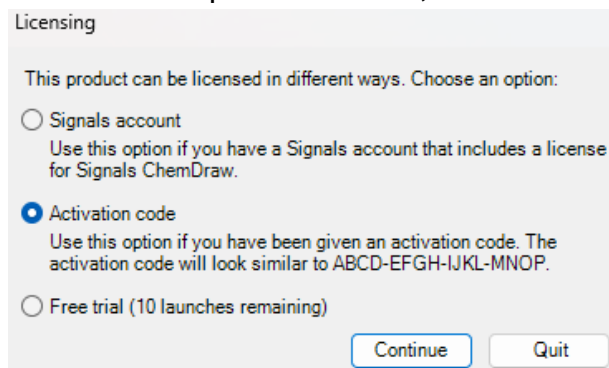
1. Open **File Explorer** and navigate to <\\blackmore.msu.montana.edu>



- a.
2. Find the folder named “clsit-apps”, open that folder and the “Software” folder.



- a.
3. Navigate to the ChemDraw folder.
4. Open the “ChemDraw Activation Code” text document.
  - a. You will need this code to activate ChemDraw when first opening.
5. Open the Windows folder for the install file. Double click and run.
  - a. This can take some time to open, it is about 1.3GB.
  - b. The install will extract temp files onto your computer.
6. Accept Defaults or customize as needed for each page. Click “Finish” when done.
7. Launch ChemDraw.
8. A new window will open like below, click “Activation Code” for licensing.



a.

9. Fill out your Name, Email and paste the Activation Code from the text document you opened earlier.

Revvity Software Activation

**You must activate your software to continue:**

\*Name: Name Here

Organization:

\*Email: email@email.here

\*Activation code: 96E2-9D28-498C-FE86  
XXXX-XXXX-XXXX-XXXX

Activate or deactivate online  
 Activate or deactivate by uploading a file

Troubleshooting  
For help, contact us at <https://support.revvitysignals.com/>

Your host ID is:

License Details... Log...

Help Deactivate Activate Cancel

a.

10. You should see a success window if done correctly. Click "OK"

Revvity Software Activation

**i** You have successfully activated ChemDraw Prime.

OK

a.

11. ChemDraw will open and be activated. You are now good to go.